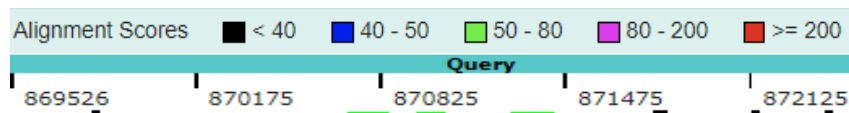


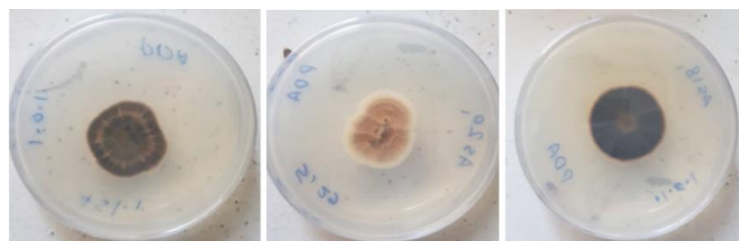
Supplementary files



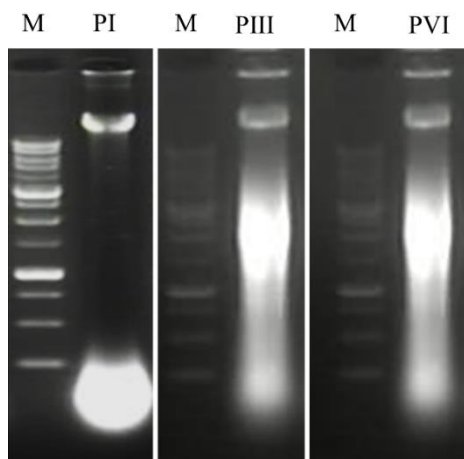
A

CaGAPDH (+)	871276	ACCTTAGCAAGTGGGGCAAGGCGAGTTGGTGGTACAACCTAGCGTTGGAAACAATGTGCGAAC	871335
ArGAPDH (+)	1035G..G..G..A..C.A.....T..G...GAG.....G.GG.CC...TG	976
CaGAPDH (+)	871336	TCTGGCTTGTATTTCATGCTCGTTAACACCAACAACAACATGGGAGCATCTTTACTGGGA	871395
ArGAPDH (+)	975	..G.A.....GGTC.CG.T...G.....C.TG..G.....G..AGCGGA....	916
CaGAPDH (+)	871396	GCAGAAATAATGACCTTCTTGGCACCACCCT	871426
ArGAPDH (+)	915G..G.C.....G..T....	885
CaGAPDH (+)	870702	CTTGATAGCAGCCTTGATTTTCGTCTAGGTAGCGGCCTTCTCAAGCTTCACTGTAAGGTC	870761
ArGAPDH (+)	1336CG..CT.....C.....G..AC.....G.TGCGG..A..C.A...	1277
CaGAPDH (+)	870762	AACAACGTGAGACATCAACAGTTGGGACACGGAATGCCATTCGGTCAATTTTCCATTCAA	870821
ArGAPDH (+)	1276G.....G.TGGAG..G..A....C.TG.A...G..A..G.GC..G..G..G.G	1217
CaGAPDH (+)	870822	AACAGGAAGCACTTTGCCAACAGCCT	870847
ArGAPDH (+)	1216	GT.....TG..C.....G.....	1191
CaGAPDH (+)	870945	CCTTAGCAGCTCCGGTACTGCTAGGAATGATGTTAAATGAG--GCAGCTCTTCCACCTCT	871002
ArGAPDH (+)	1193G..G..A....G...GA.....--C....CA..G.TG.GG.....A.G	1136
CaGAPDH (+)	871003	CCAGTCTTTGGCTGATGGCCCATCAACAGTCTTCTGAGTGGC	871044
ArGAPDH (+)	1135C..A..G..G..A..G.....GAC.....G.....	1094
CaGAPDH (+)	872366	ATGAAGGGATCGTTAACTGCAACGAGTTCAACATC	872400
ArGAPDH (+)	568G..G..G...TC.....G..	534
CaGAPDH (+)	871770	CCTTCAAATGGGCAGCAGCCTTGTCCTTATCGGTAAAAACACCGGTGGACTCAAC	871824
ArGAPDH (+)	887G..A..CTT.....C..GG.GGT...G..G.....G..	833
CaGAPDH (+)	869808	CTTGGCAATGTGAACAATGAGGTCAACGACACGG	869841
ArGAPDH (+)	1546AG..C.AA.....G.G.....	1513

B
Supplementary file 1: Schematic representation of overlapping and similar regions in the nucleotide sequence of the gene encoding *gapdh* (*Cagapdh*) in chickpea with retrieval number GeneID: 101491441, and the gene encoding *gapdh* in *A. rabiei* (*Ar**gapdh*) with retrieval number EKO05_007298 (A). Sequence alignment result in the same regions in both genes analyzed with the Blast2 tool in the NCBI database (B).**



Supplementary file 2: Growth of the fungal isolates related to pathotypes PI, PIII and PVI of *Ascochyta rabiei* two weeks after cultivation on PDA.



Supplementary file 3: The electrophoresis pattern of extracted DNA by CTAB method related to pathotypes I, III and VI of *Ascochyta rabiei*. M is 1 Kb molecular size marker.